



DRILLING LOG



FROM : (m) 560 TO : (m) 3060 SCALE : 1/ 1000

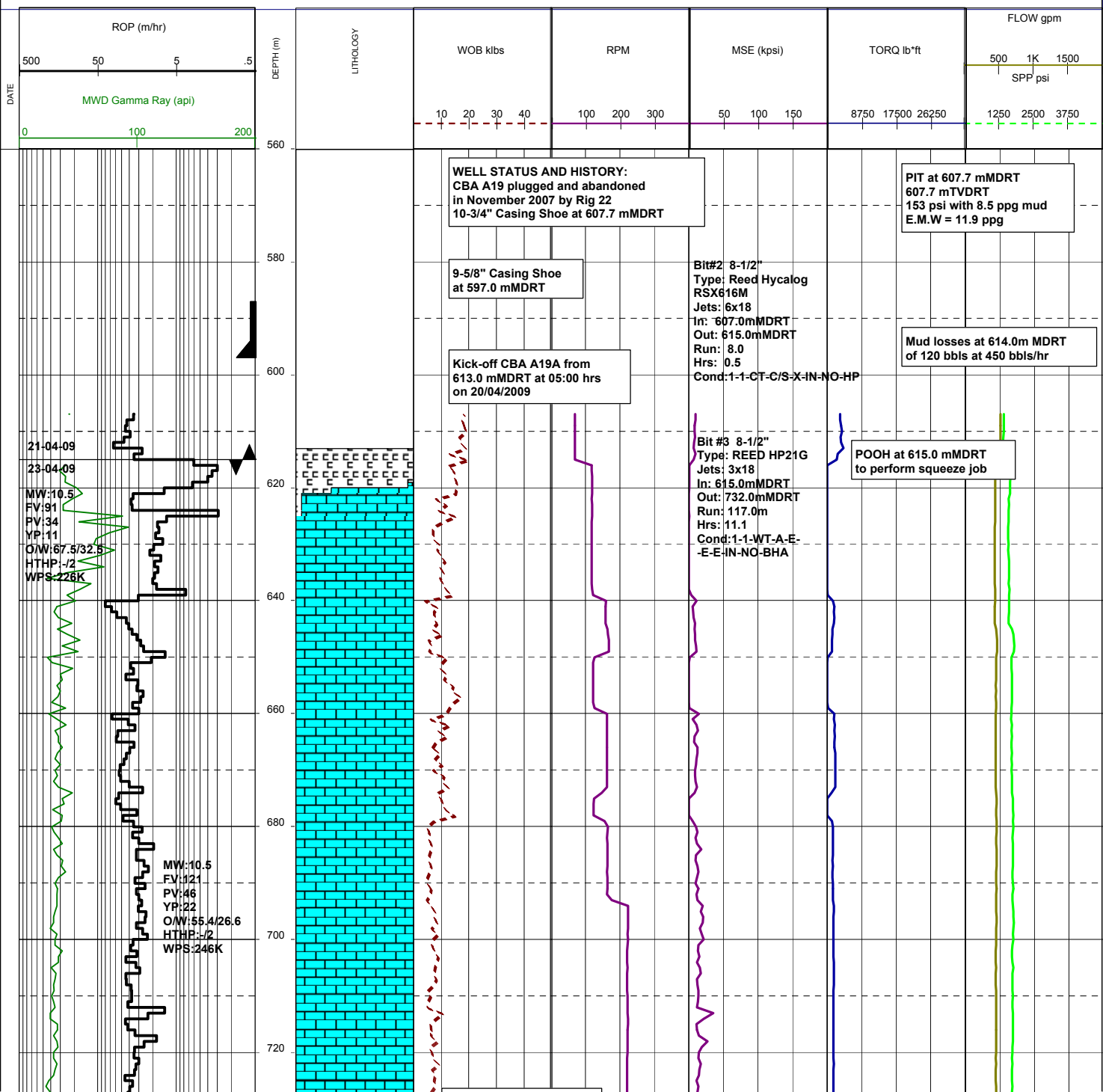
Well Name : Cobia A19A
Company : ESSO AUSTRALIA LTD

Country : AUSTRALIA

RT-MSL (m) : 41.0
RT-SEABED (m) : 120.0

Final TD:
Final TVD:

Generated by geoNEXT Package



24-04-09

25-04-09

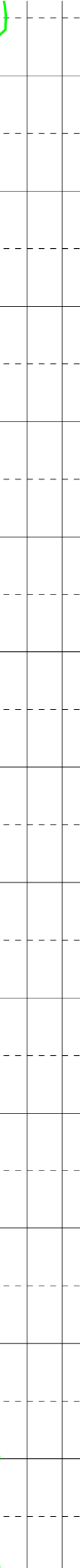
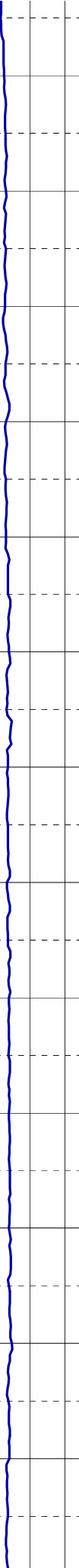
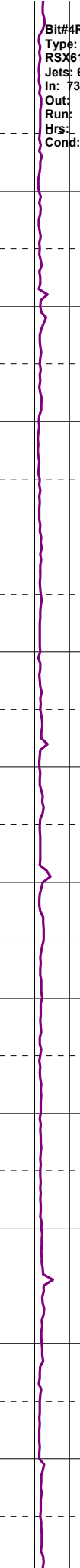
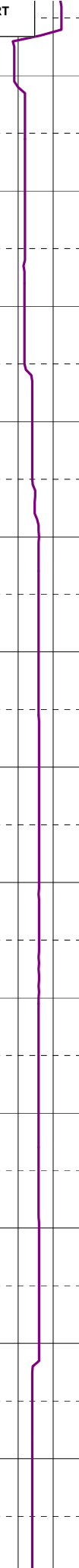
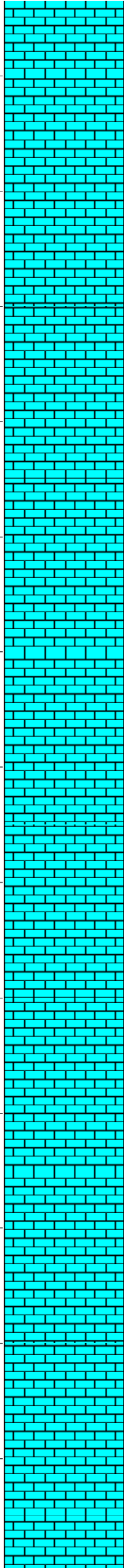
MW:10.5
 FV:134
 PV:45
 YP:20
 O/W:67.8/32.2
 HTHP:-72
 WPS:229K

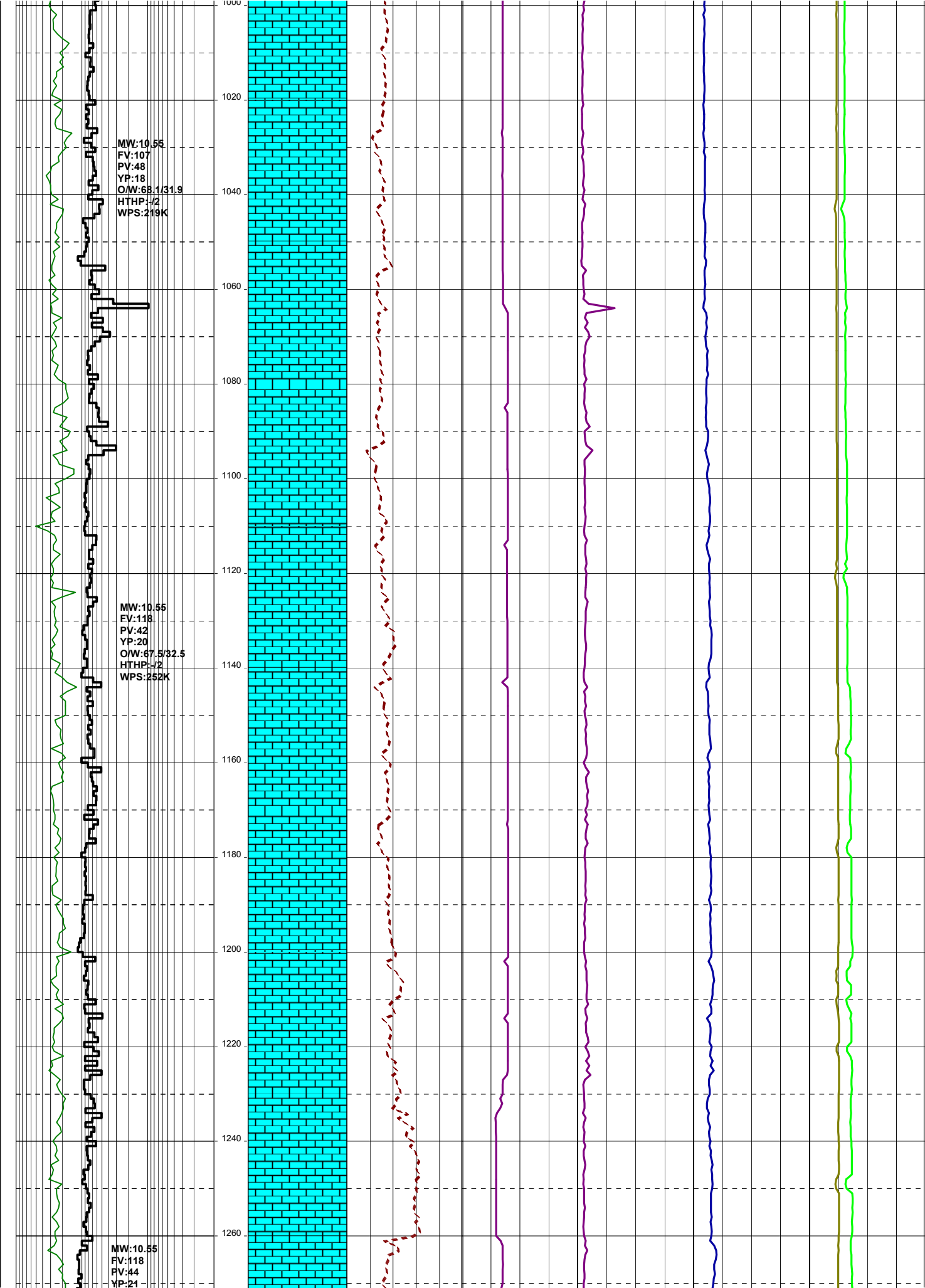
MW:10.5
 FV:108
 PV:35
 YP:15
 O/W:68.2/31.8
 HTHP:-72
 WPS:219K

POOH at 732.0 mMDRT
 For BHA Change

Bit#4RR 8-1/2"
 Type: Reed Hycalog
 RSX616M
 Jets: 6x18
 In: 732.0mMDRT
 Out:
 Run:
 Hrs:
 Cond:

740
760
780
800
820
840
860
880
900
920
940
960
980
1000

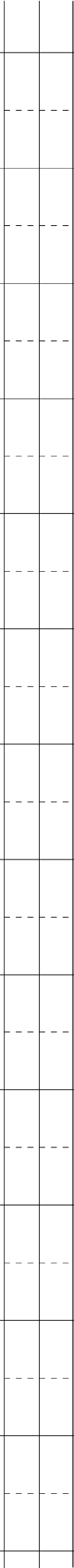
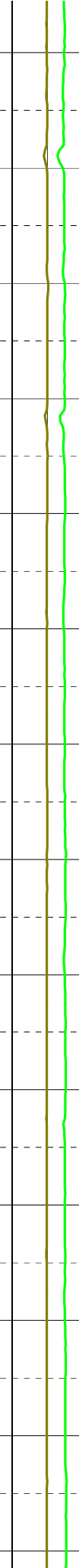
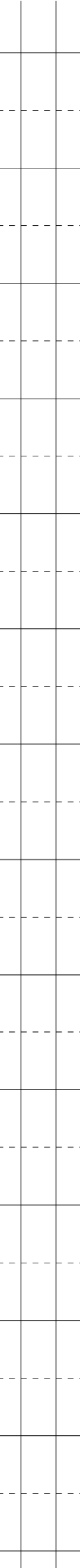
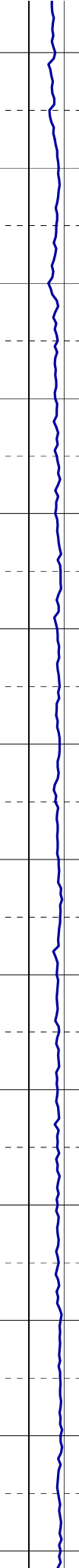
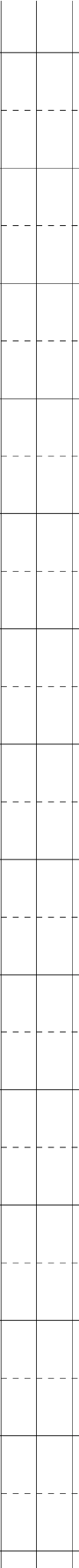
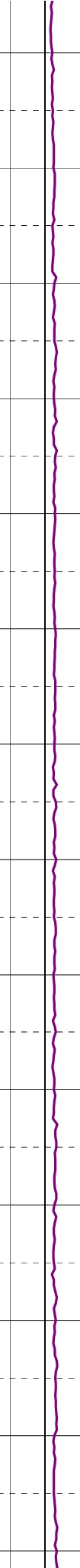
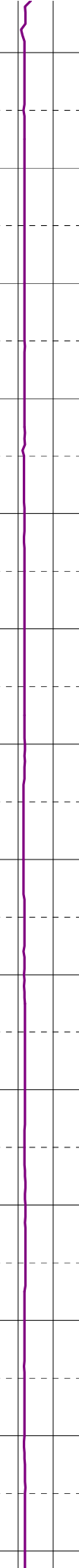
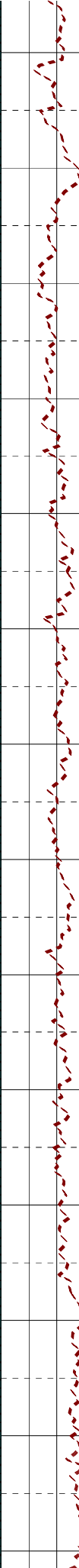
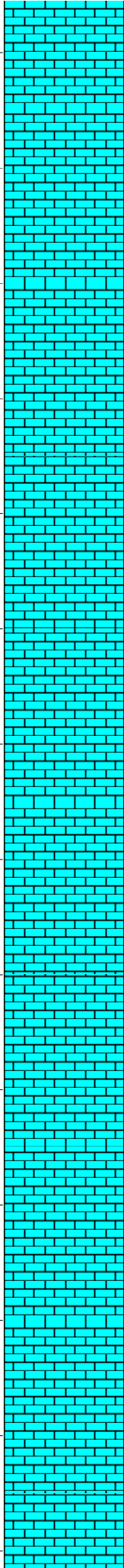


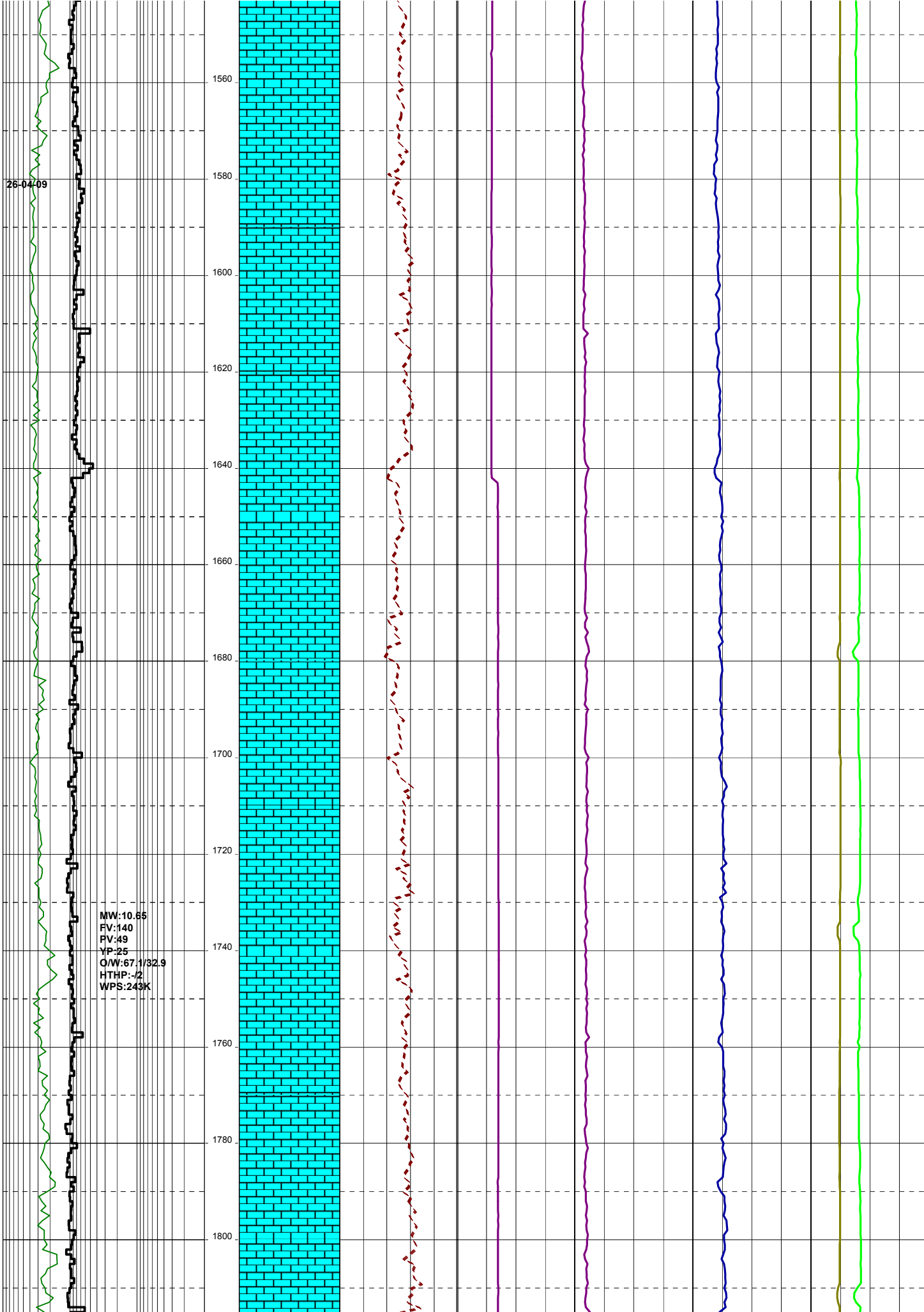


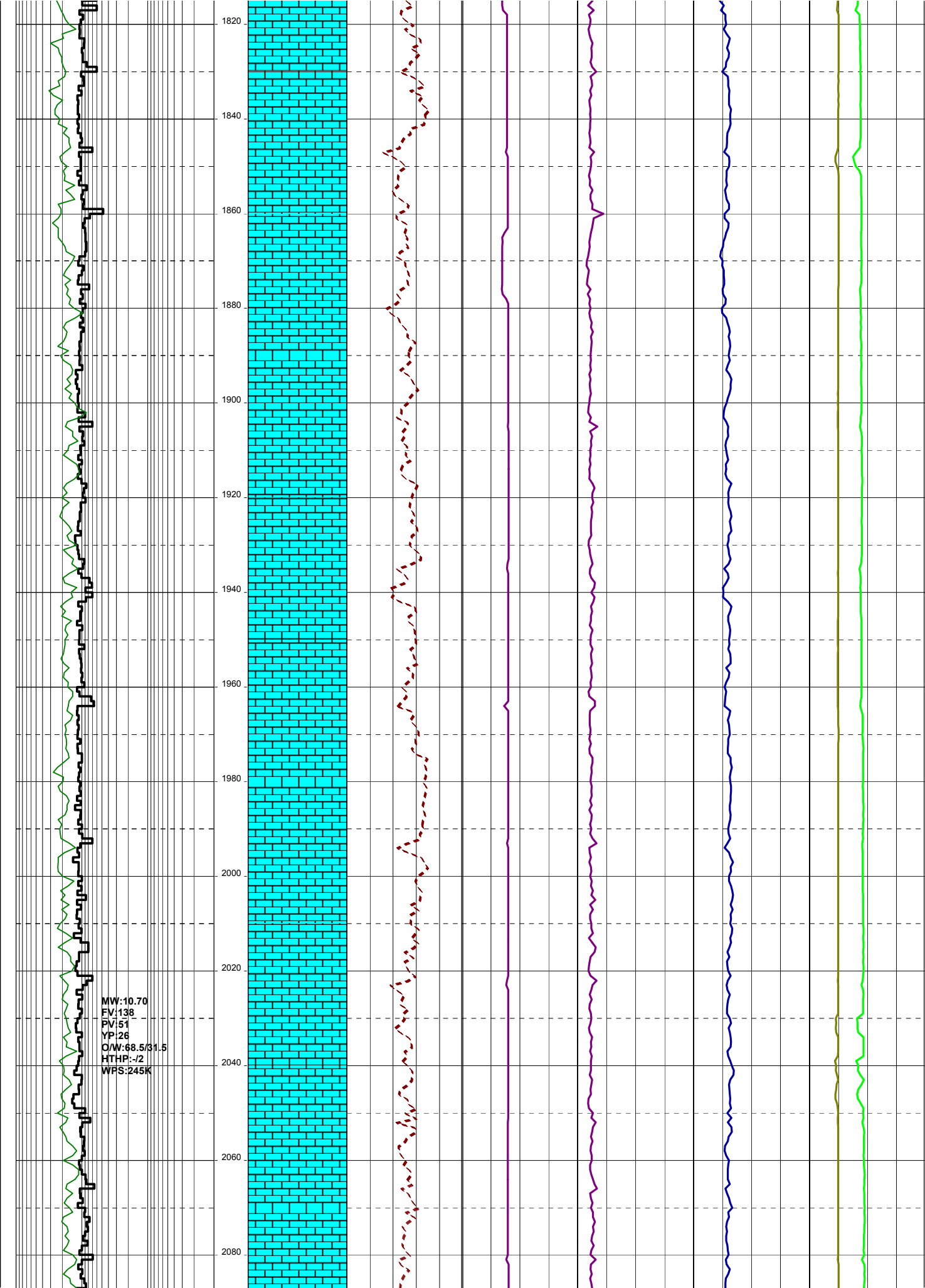
O/W:67.1/32.9
HTHP:-.2
WPS:252K

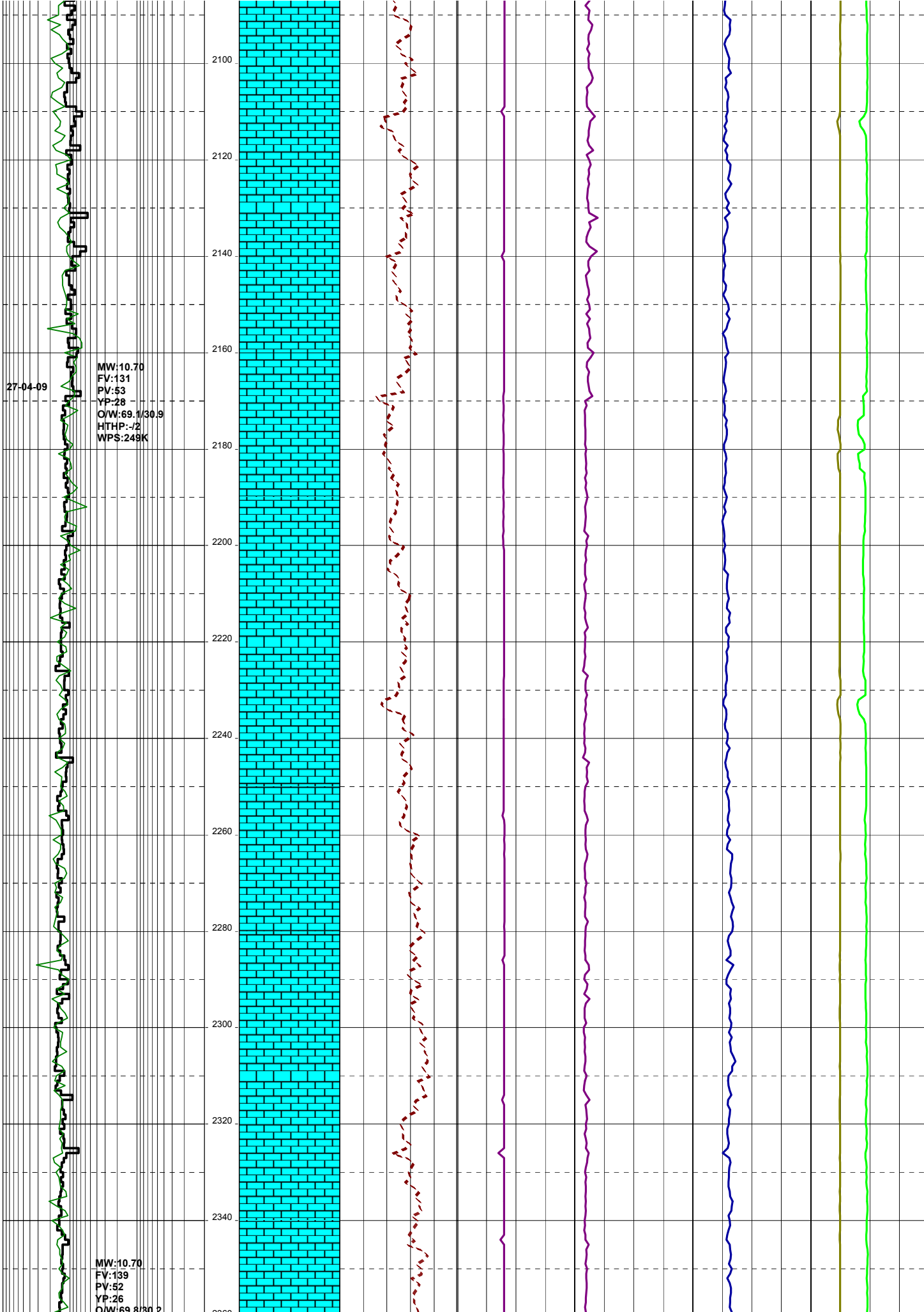
MW:10.60
FV:107
PV:49
YP:24
O/W:67.6/32.4
HTHP:-.2
WPS:238K

1280
1300
1320
1340
1360
1380
1400
1420
1440
1460
1480
1500
1520
1540

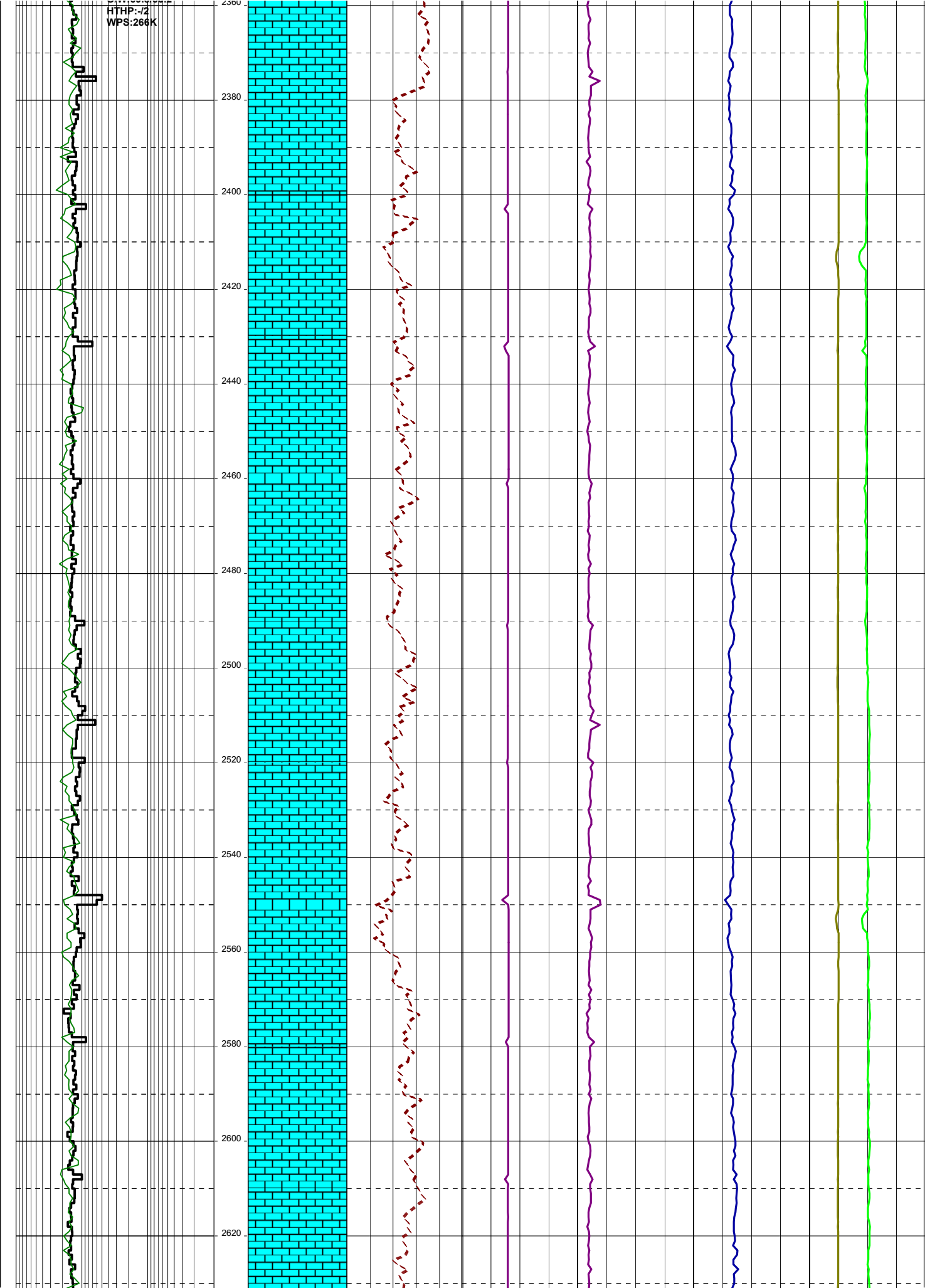






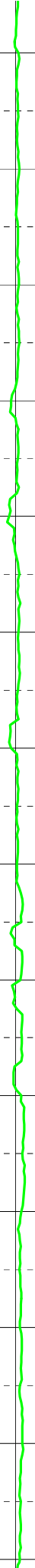
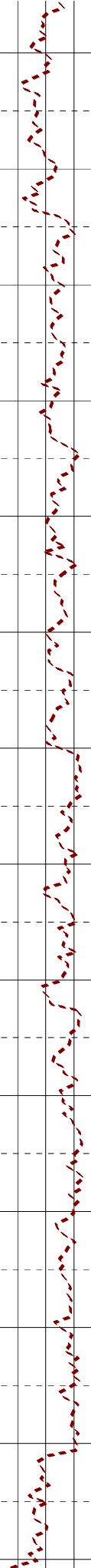
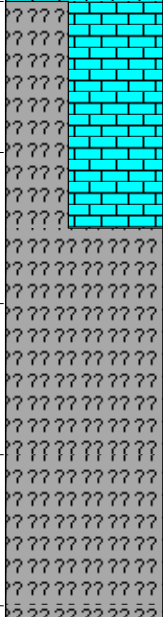
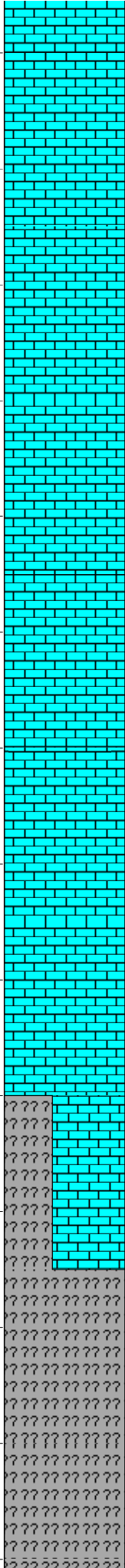


HTHP-72
WPS:266K



MW:10.85
FV:138
PV:52
YP:26
O/W:70.4/29.6
HTHP:-J2
WPS:275K

2640
2660
2680
2700
2720
2740
2760
2780
2800
2820
2840
2860
2880
2900



MW:10.90
F :129
F :50
YP:31
O/W:70.4/29.6

HITHP-172
WPS.268K

28-04-09

